



Computer Generated Image. Elevations may vary from plot to plot.

The Cove

The Cove is an elegant three bedroom, three-storey home. On the ground floor there is an integral garage with personnel door to the hallway. Stairs lead to the first floor where you'll find a great sized kitchen/dining room with double doors opening out into the garden.

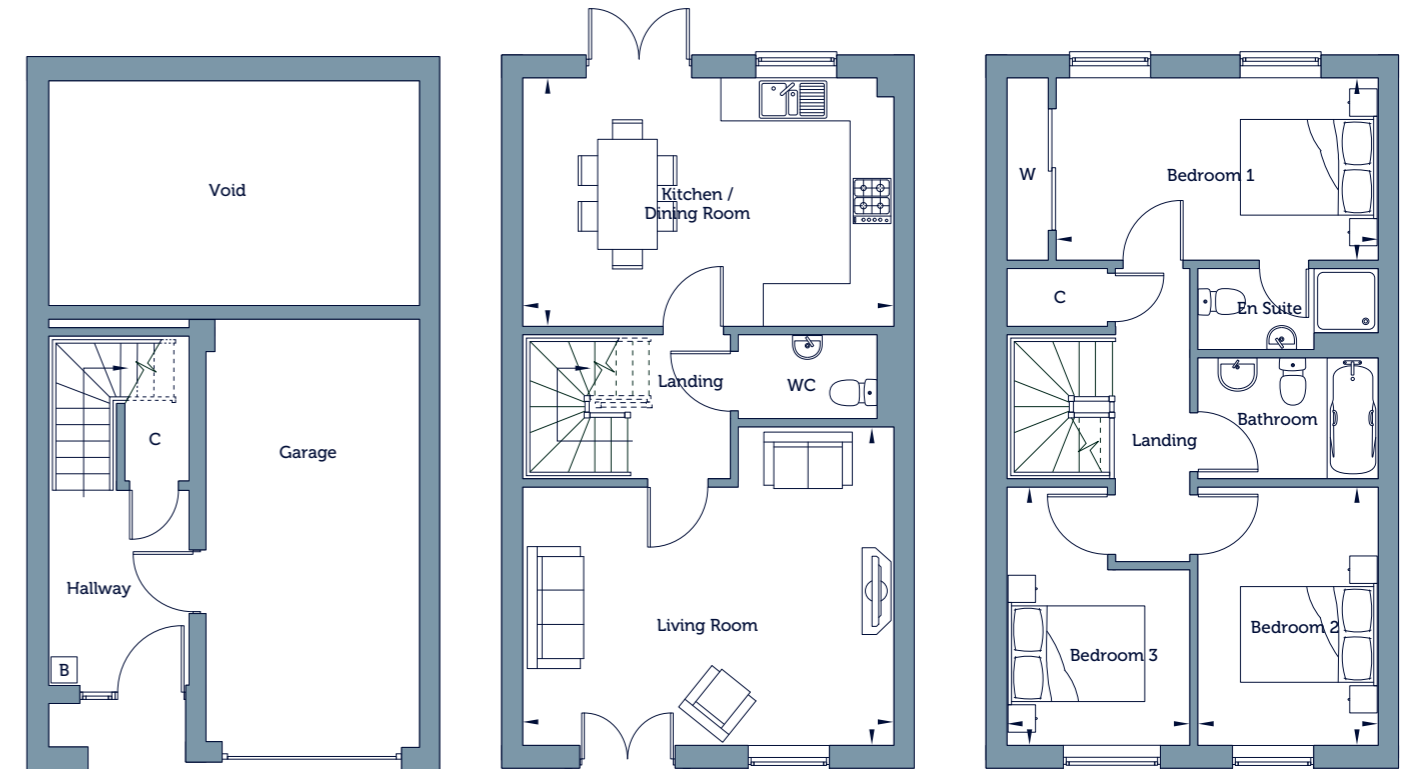
The landing also leads through to a spacious living room and a convenient WC. on the second floor you'll find a main bedroom to the rear with en-suite shower room and built-in wardrobe, a family bathroom and to the front two further bedrooms.



The Cove

Three Bedroom House

Market Sale 88, 89, 90, 91, 92, 93, 94, 95, 96 and 97



First Floor

Living Room	14'7" x 17'0"	4.47m x 5.20m
Kitchen / Dining Room	11'5" x 17'1"	3.48m x 5.23m

Second Floor

Bedroom 1	8'4" x 14'9"	2.55m x 4.52m
Bedroom 2	11'10" x 8'4"	3.62m x 2.54m
Bedroom 3	11'10" x 8'4"	3.62m x 2.56m

Gross Internal Area	1205 sq ft	112 sq m
---------------------	------------	----------

Handed Plots 89, 91, 93, 95 and 97

*Window locations may vary, refer to plot specific plans at time of reservation.

Key

B Boiler AC Airing Cupboard C Cupboard W Fitted Wardrobe

Floorplans are not drawn to scale. Measurements are taken from areas marked ►. They are maximum approximate dimensions and given as a guide only. These should not be used as a basis for purchasing flooring or furniture. We reserve the right to alter plans, specification, position of doors and windows and change tenure subject to demand without prior notice. External elevations vary from plot to plot. Please ask your Sales Consultant for current information when reserving your new home. Computer generated image overleaf. Information correct at time of going to print.